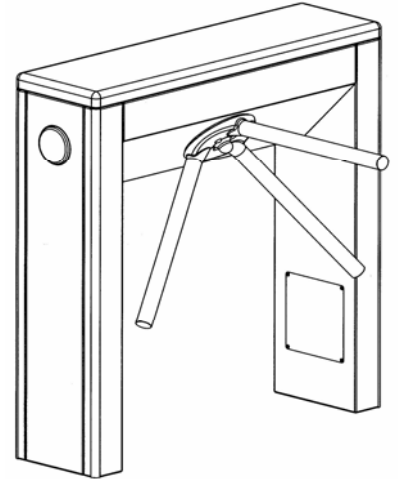


# SIMPLEX 45

*Tripod Turnstile for internal installation*



## Technical Specification

- Drive:** Hand operated
- Orientation:** Pass Left or Pass Right
- Materials:**
- Casework: 304 Grade Stainless Steel SB finished
  - Casework lid: 304 Grade Stainless Steel SB finished
  - Tripod hub: Aluminium Alloy painted dark grey
  - Tripod arms: 304 Stainless Steel tube, polished diam 358 mm, walkway 500mm
- Function:** Bi-directional, electronically controllable. When go signal is given from the access control system or from a push-button, the tripod can be rotated for 120°, allowing the passage of only one person at a time.
- Mechanism:** Control of the tripod operation is achieved by an electro-mechanical head mechanism located within the top section of the turnstile casework. It is silent in rotation and comprises the following standard features:
- A positive lock action that prevents two passages at one time
  - A self centering mechanism to ensure complete rotation of the mechanism to the home position
  - A hydraulic damper to ensure smooth operation and longer mechanism's life
  - Anti backup device to prevent reverse rotation once the mechanism has moved 67° from home
- Operating Modes:** The mechanism can be configured to operate in two standard modes.
- Normally Closed: the mechanism is locked until a valid authorisation signal is received.
  - Normally Open: the mechanism is permanently unlocked and will only lock if passage is attempted without a valid authorisation signal. In this mode the MTBF is significantly increased from 1.5 to 2.5 million cycles, it reduces power consumption and increases passage throughput speed.
- Power Failure:** In case of power failure, the tripod can be configured to fail-safe (SMT), i.e. rotates freely, or fail-lock (BMT), i.e. locks in the home position. Either option is available in one or both directions.
- Fire alarm – emergency input. Input facility available for free voltage contact to effect fail state.
- Interface:** The mechanism is controlled via the LL2001 Lite microprocessor control logic with the following standard features:
- One input for opening/locking the mechanism in each direction (voltage free contact required)
  - Four protected outputs for piloting way mode indicators
  - Two protected outputs for counting passage in either directions
  - Two free voltage contacts indicating availability of use in either direction or for counting passage in either direction.
  - One serial port RS485
  - User inputs for remote controlling of the unit
  - The unit has an adjustable time out facility, i.e. Go Signal will be cancelled if passage through turnstile is not completed within a pre-set adjustable time.

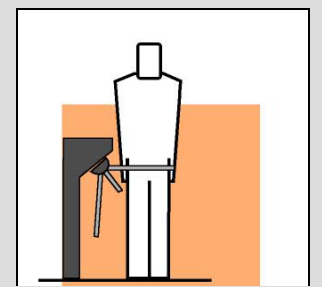
## Product Description

Traditionally shaped, the SIMPLEX has been designed to create a real transit passageway to discourage any attempt to override the turnstile. To improve safety and aesthetics, all corners and edges have been rounded to a 15 mm radius.

## Users include

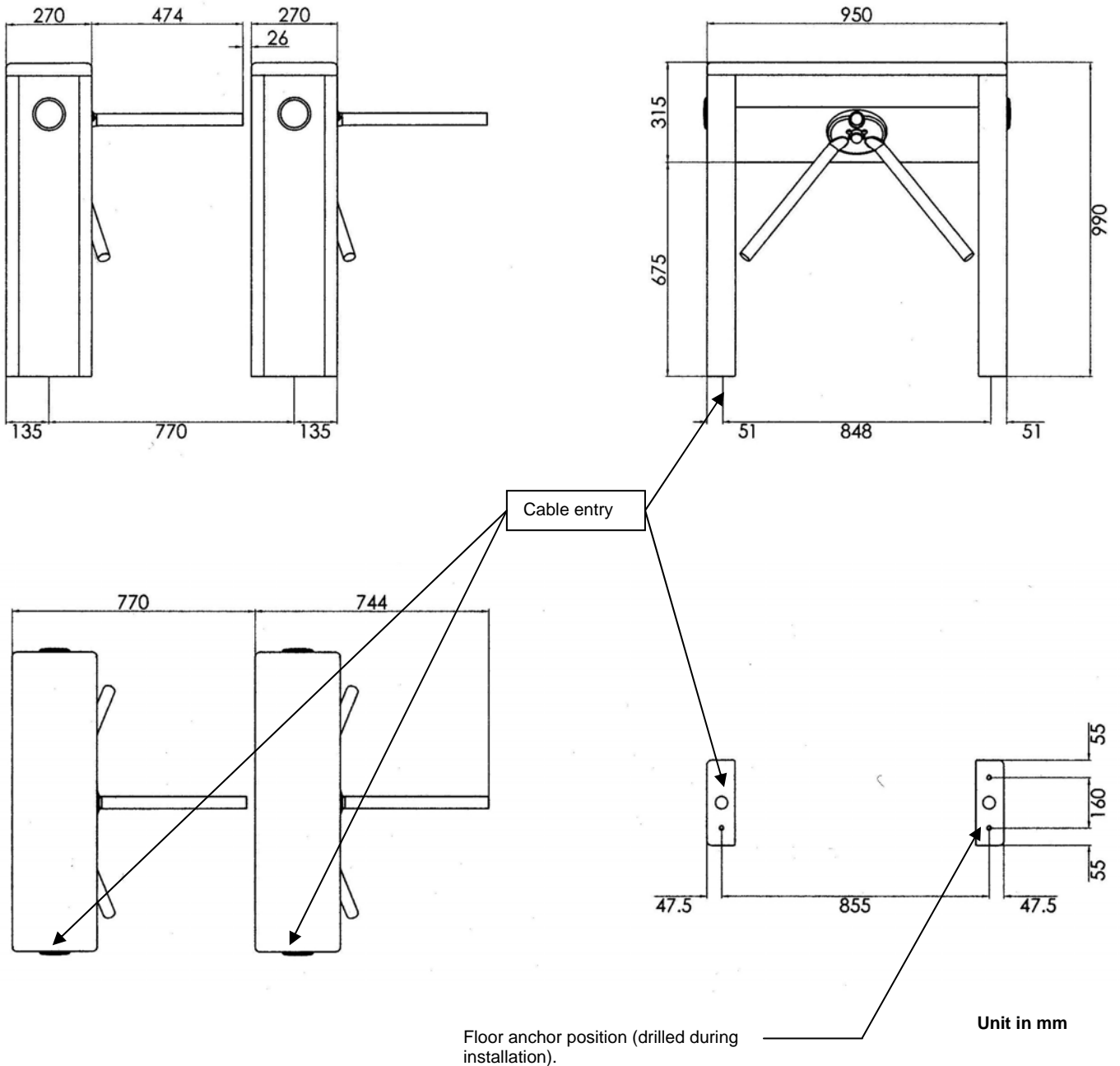
- Government
- Retail
- Finance
- Telecommunications
- Information Technology
- Banking
- Publishing
- Leisure
- Petrochemical
- Education
- Public transportation

## TRIPOD TURNSTILE





Site preparation **SIMPLEX**



Concrete to UNI 9858, type RCK250.  
Base to be flat and level to +/-5mm over footprint area

**IMPORTANT**

- Any horizontal pipe or conduit runs below the SIMPLEX must be at least 140mm below floor level.
- The dimensions reported on this Product Data Sheet are for information only. In order to prepare the Installation site, please refer to the lay-out drawings prepared by Gunnebo Entrance Control SpA or ask confirmation.

**Flow Rates**

Reader Device	Number per minute
Insertion type	20
Insertion type with PIN code keypad	10
Swipe type	30
Swipe type with PIN code keypad	12
Proximity 'Hands Free'	40

- Please note the figures are approximate and must be confirmed with Gunnebo Entrance Control SpA.
- Figures quoted are for one person per complete passage per walkway and per minute.
- It is assumed the access control authorisation response is instantaneous.



**ITALY**

Gunnebo Entrance Control SpA, Via A Volta 15 - IT 38015, Lavis (TN)  
 Tel +39 0461 248 9      Fax +39 0461 248 999

[info@italdis.com](mailto:info@italdis.com)  
[www.gunneboentrance.com](http://www.gunneboentrance.com)

*Note: In pursuit of its policy of continuous refinement and improvement, Gunnebo Entrance Control SpA reserves the right to modify design and details.*

**A COMPANY WITHIN THE GUNNEBO GROUP.....**

**HEAD OFFICE SWEDEN – Gunnebo Entrance Control AB, SE-590 93, Gunnebo.**  
 Tel +46 (0) 490 89000, Fax +46 (0) 490 23889

**DENMARK** Gunnebo Protection A/S  
 Division Entrance Control  
 Erhvervsparken 3, DK-4621 Gadstrup  
 Tel +45 46 19 14 66  
 Fax +45 46 19 14 55

**FRANCE** Gunnebo Entrance Control SARL  
 Zone d'Activites Le Mandinet,  
 20 Rue des Campanules  
 F-77185, Lognes  
 Tel +33 (0) 1 64 80 14 40  
 Fax +33 (0) 1 64 80 14 39

**GERMANY** Gunnebo Entrance Control GmbH  
 Diagonalstrasse 41, D-20537  
 Hamburg  
 Tel +49 (0) 40 47 11 30 0  
 Fax +49 (0) 40 47 11 30 79

**HONG KONG** Gunnebo Entrance Control  
 Room 2312, C.C. Wu Building,  
 302-308 Hennessy Road, Wanchai.  
 Tel +852 2882 8337  
 Fax +852 2523 7880

**ITALY** Gunnebo Entrance Control SpA  
 Via A Volta 15 - IT 38015  
 Lavis (TN)  
 Tel +39 0461 248 900  
 Fax +39 0461 248 999

**NORWAY** Gunnebo Troax A/S  
 Division Entrance Control  
 Postboks 179, Kalbakken N-0903, Oslo  
 Tel +47 22 80 42 00  
 Fax +47 22 80 42 01

**SPAIN** Gunnebo Entrance Control  
 BBC, Comte d'Urgel 143, lola 08036,  
 Barcelona  
 Tel +34 93 452 59 56  
 Fax +34 93 451 56 53

**SWEDEN** Gunnebo Entrance Control  
 Box 500, Kumla Gardsvag 33F, 145 63  
 Norsborg  
 Tel +46 (0)8 53 17 15 75  
 Fax +46 (0) 8 53 18 85 39

**UNITED KINGDOM** Gunnebo Mayor Ltd  
 Bellbrook Business Park, Uckfield,  
 East Sussex, TN22 1QQ  
 Tel +44 (0) 1825 761022

**USA** Gunnebo Omega Inc  
 535 Getty Court, Suite F  
 Benicia, CA 94510  
 Tel +01 707 7480885  
 Fax +01 707 7456020