

Product Sheet

HiddenGate2 FPW

Full Panel Gate for Internal Installation giving a wide walkway to comply with Disability Discrimination requirements



Technical Specification

Unit Dimensions: Casework Length (Normally Closed) 1448mm
(Normally Open) 1932mm
Casework Height 950mm
Casework Width 480mm
Clear Walkway 900mm
Panel Height 1200mm or 1800mm

Drive: Motorised

Materials: Top: Painted Polyurethane finished metallic grey
Front: Painted Polyurethane finished metallic grey
Panel Housing: Painted Steel finished to match Top and Front
Inlay: 304 grade grained Stainless Steel
Panels: 12mm Tempered Glass
Side Doors: PMMA and grained Stainless Steel
Plinth: 304 grade grained Stainless Steel

Function: Passage in both directions electronically controlled. The HiddenGate is available in Normally Open (N/O) or Normally Closed (N/C) mode. In N/O the HiddenGate provides an always open walkway in rest position and will only close at unauthorised entry or tailgating attempts. This provides high flow rates and increased MTBF times.

In N/C the HiddenGate provides a closed walkway and will only open on acceptance of an authorised signal.

Drive Mechanism: The panels are moved by two linked mechanical arms. The arms are rotated by a torque shaft connected to the drive unit. The drive unit is a DC motor connected to a worm reduction gear and a bi-directional encoder. A microprocessor control system guarantees the precise movement and positioning of the wings.

The opening and closing speeds of the Panels are adjustable. A safety photocell prevents the Panels from closing on an obstruction. Should the normal panel operation be stopped by an obstruction, the controlling logic detects an abnormal condition and reverses.

The panels are locked in the open and closed positions by means of a mechanical system. When closed they can not be forced open.

Method of Operation: On receiving a signal from the access control system, or push button, the panels will open. If an unauthorised person tries to tailgate or attempts to enter from the opposite direction, the system detects the unauthorised passage and activates the in-built alarm system.

Presence sensing is achieved by 6 No. infrared sensors for the N/C version and 14 No. for the N/O.

Status lights: LED display Status Lights flush mounted within the HiddenGate lid top face. The Green badge symbol is continuously illuminated indicating passage is available. Upon authorisation a Green Arrow will illuminate in the direction of passage authorisation whilst in the opposite direction a Red cross symbol will illuminate to indicate the unit is not available for use or is already in use.

Power Failure: In the event of a power failure the panels will remain in the current position (if the optional battery back-up is not installed).

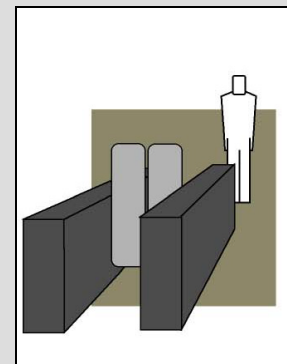
Fire Alarm: Input facility is available for voltage free contact supplied by others to effect fail state.

Product Description

The HiddenGate Panelled entrance gates are the new systems for today's security requirements. Well proven techniques incorporating new design concepts with rapid operation and the use of modern materials form the basis for the HiddenGate range. Available in "Normally Closed" for obvious security or "Normally Open" for a more subtle presence.

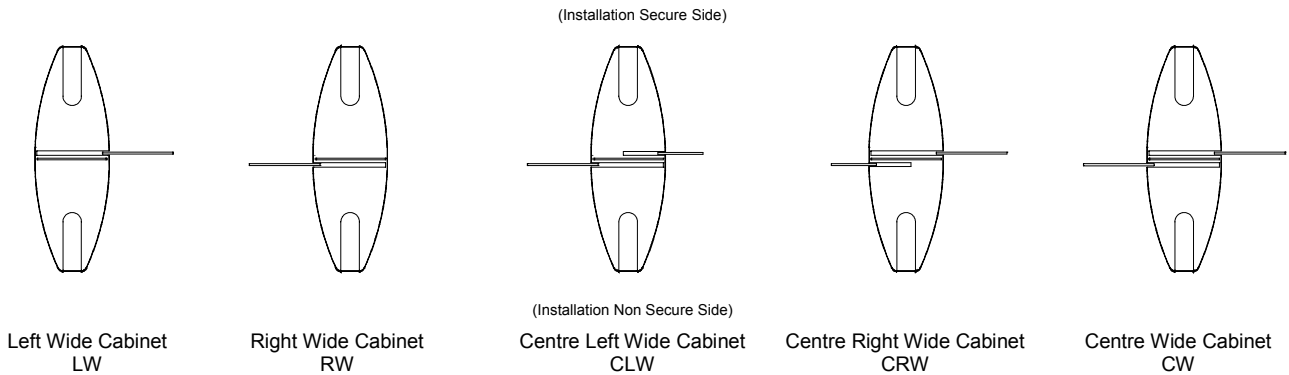
Users include

- Government
- Retail
- Finance
- Telecommunications
- Information Technology
- Banking
- Publishing
- Leisure
- Petrochemical
- Education



Interface:	Potential free contact provided by either cardreader or pushbutton input. Cardreader inhibit and reset outputs signals are available as standard.	
	The unit has an adjustable time out facility if required, i.e. Go signal will be cancelled if the passage through the HiddenGate is not completed within a pre-set time. The Standard default is 8 seconds adjustable via parameter change.	
Power Supply:	115/230 Volts AC 50/60 Hz	
Power Rating:	Stand by	10 VA
	In operation	300 VA
Logic Voltage:	24 Volt DC	
Installation Details:	The HiddenGate is delivered as a fully assembled unit and may require lifting gear off loading.	
Approximate Weight:	NC - Left or Right cabinet (LW or RW)	circa 185Kg per cabinet
	NC - Centre cabinet (CLW, CRW or CW)	circa 240Kg per cabinet

Available models



Note - All cabinet variants are available in either Normally Open or Normally Closed construction

Extra Accessories and Optionals

Alternative Materials, Finishes and Custom Design

- Refer to Gunnebo Italdis for specific material design requirements.

Cardreader Mounting (Please refer to Gunnebo Italdis for feasibility)

- Integration of customer supplied readers into the HiddenGate Top or Front inlays.
- Cardreader Pedestals.

Battery Back Up

- On power failure, the battery back up option will allow the panels to open, stop and become inactive. The panels will remain in this position until power is restored.

Push Button Control

- Simple console to control HiddenGate panels release.
- Remote console to specific requirements.
- Casework mounted push button.

Additional Interface

- RS 485 Serial Interface

Traffic Flow Control

- LED Way Mode Indicator - Switching Red cross and Green arrow to indicate the unit is available for use
- Remote switching of unit for Traffic Flow.

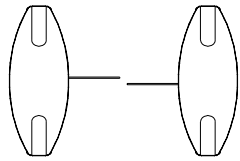
Counting

- LCD Counter
- Electro-mechanical Counter

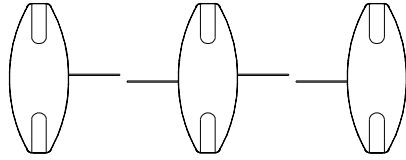


Installation Example

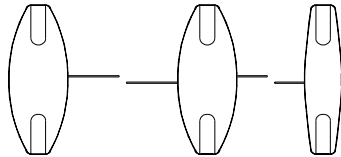
Hidden Gate General Lane Configuration



One Lane configuration comprising of
N^o1 LW and 1N^o RW cabinets



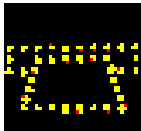
Two Lane configuration comprising of
N^o1 LW, 1N^o CW and 1N^o RW.



Two Lane configuration comprising a mixture of wide and standard
cabinets comprising 1N^o LW, 1N^o CRW and 1N^o R (standard 300mm unit)
Please refer to Gunnebo Italdis for layout advise.

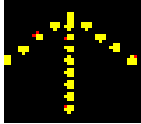
Status Light User Instructions

• Normal Use



Green Card (Rest mode)

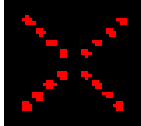
- Present personal security card to the reader mounted on the unit for authorisation.
- Wait for the Green Arrow to illuminate and the barrier to open.



Green Arrow (Authorised use or designated free passage)

- Proceed through the unit.

Note - For FREE PASSAGE configuration, authorisation is not required and is normally used for EXIT only.



Red Cross (Unit in use or no passage)

- Wait until the passageway has been vacated and either the Green Card or Green Arrow to illuminate. (See above)

• Alarm Conditions



Flashing Red Cross and Audible Alarm (Fraudulent condition)

- This alarm mode will be activated via the following scenarios;

Passageway is already in use and a second person has attempted to follow through without authorisation. (Tailgating) OR Passageway is currently in use and you do not have right of passage.

- **Do not panic.**
- Vacate the passageway.
- Wait for the flashing Red Cross to stop flashing and the Audible Alarm to cease.
- Wait for the Green Arrow to illuminate to indicate who has the right of passage.



Flashing Green Card (Incorrect use mode)

- **Do not panic.**
- Remain in the walkway and present personal security card to the reader mounted on the unit for authorisation.
- Authorisation of passage will cancel the alarm condition.

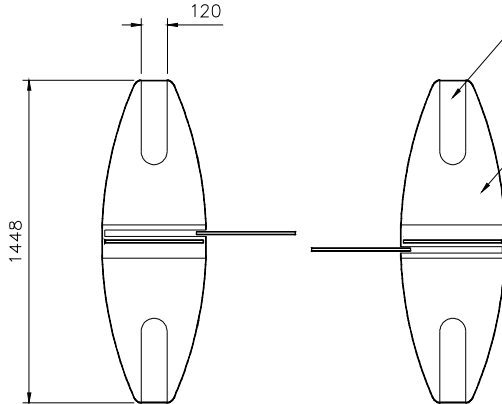
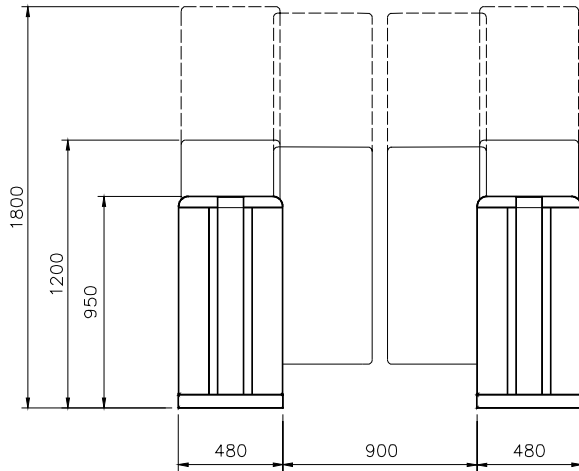


Flashing Green Arrow (Emergency / Fire Exit)

- **Do not panic.**
- There is FREE PASSAGE to evacuate through the gate

Site Preparation - HiddenGate2 FPW

Short Cabinet Normally Closed only
(Panels shown in closed position in Left and Right configuration)

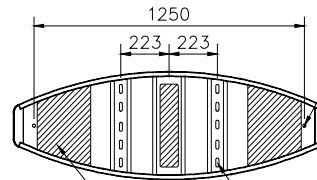
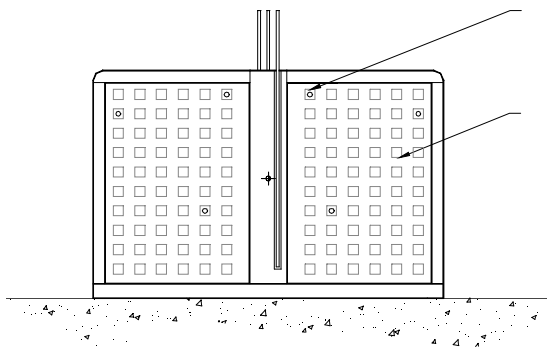


Stainless Steel inlay available to accommodate a wide selection of access control devices. (by others)

Top and fronts manufactured from self extinguishing polyurethane

IR sensors

PMMA and Stainless Steel side doors



Chassis end fixings (Drill 2N^o on site to suit)

Mechanism and chassis fixing holes dependant upon cabinet variant. (Drill 4N^o on site to suit.)

Cables and conduits to rise to shaded areas shown.

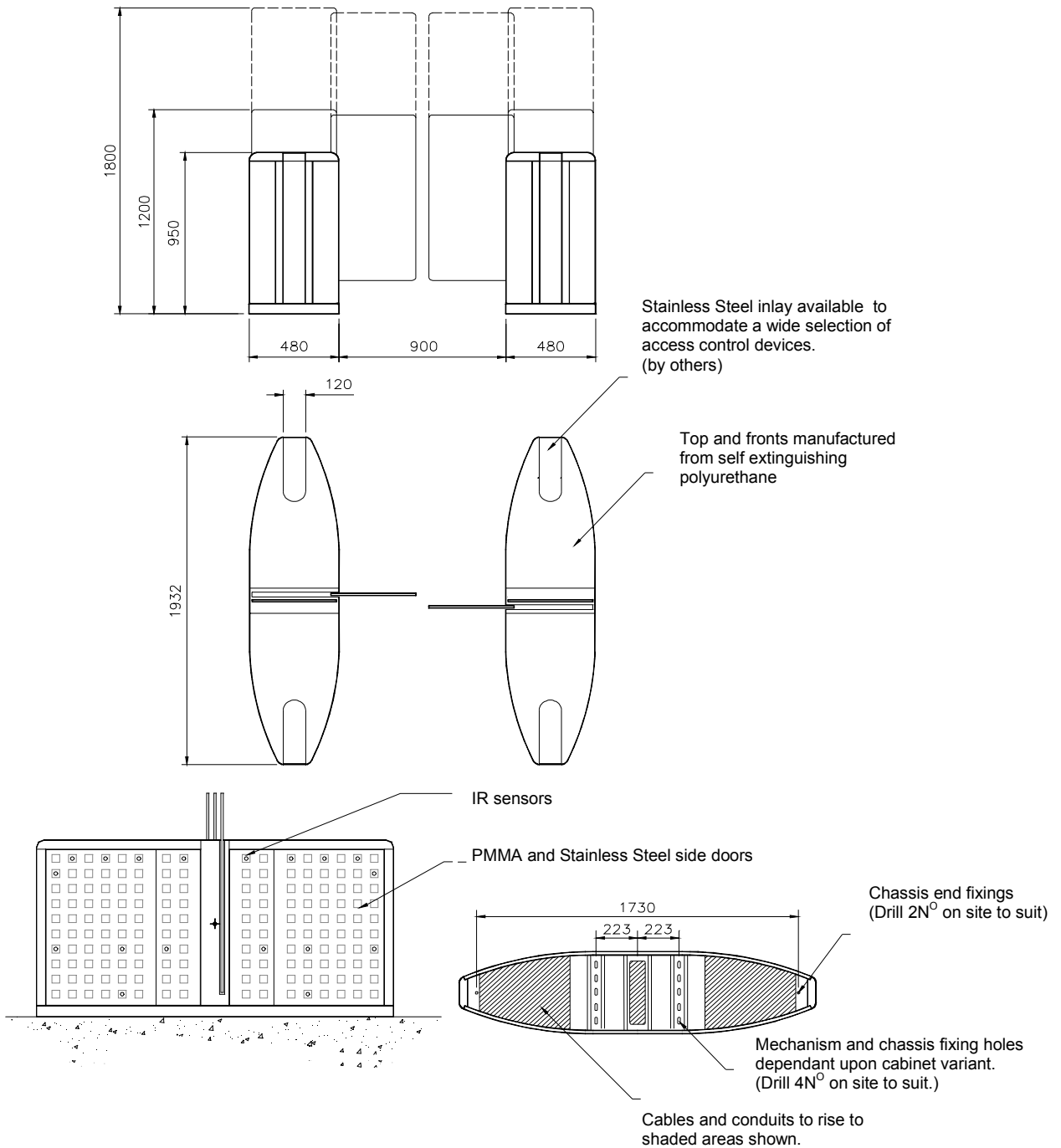
Concrete to UNI 9858, RCK250 type. Base to be flat and level to +/- 5mm over the Hidden Gate footprint area. 1800 x 750 x 150 deep min, per cabinet

IMPORTANT

- Any horizontal pipe or conduit runs below the SpeedStile must be at least 140mm below FFL.

Site Preparation - HiddenGate2 FPW

Long Cabinet either Normally Closed or Open
(Panels shown in closed position in Left and Right configuration)



Concrete to UNI 9858, RCK250 type. Base to be flat and level to +/- 5mm over the Hidden Gate footprint area.
2250 x 750 x 150 deep min, per cabinet

IMPORTANT

- Any horizontal pipe or conduit runs below the SpeedStile must be at least 140mm below FFL.

GUNNEBO ITALDIS

ENTRANCE CONTROL SOLUTIONS

ITALY

Gunnebo Italdis SpA, Via A Volta 15 - IT 38015, Lavis (TN)

Tel +39 0461 248 900 Fax +39 0461 248 999

Gunnebo Italdis SpA, Via Torri Bianche, 9 – IT 20059, Vimercate, (MI)

Tel +39 039 685 95 11 Fax +39 039 685 95 24

www.gunneboentrance.com

Note: In pursuit of its policy of continuous refinement and improvement, Gunnebo Italdis SpA reserves the right to modify design and details.

A COMPANY WITHIN THE GUNNEBO GROUP

HEAD OFFICE SWEDEN – Gunnebo Entrance Control AB, SE-590 93, Gunnebo.

Tel +46 (0) 490 89000, Fax +46 (0) 490 23889

DENMARK Gunnebo Protection A/S
Division Entrance Control
Erhvervsparken 3, DK-4621 Gadstrup
Tel +45 46 19 14 66
Fax +45 46 19 14 55

FRANCE Gunnebo Entrance Control SARL
Zone d'Activites Le Mandinet,
20 Rue des Campanules
F-77185, Lognes
Tel +33 (0) 1 64 80 14 40
Fax +33 (0) 1 64 80 14 39

GERMANY Gunnebo Entrance Control GmbH
Diagonalstrasse 41, D-20537
Hamburg
Tel +49 (0) 40 47 11 30 0
Fax +49 (0) 40 47 11 30 79

HONG KONG Gunnebo Entrance Control
Room 2312, C.C. Wu Building,
302-308 Hennessy Road, Wanchai.
Tel +852 2882 8337
Fax +852 2523 7880

ITALY Gunnebo Italdis SpA
Via A Volta 15 - IT 38015
Lavis (TN)
Tel +39 0461 248 900
Fax +39 0461 248 999

NORWAY Gunnebo Troax A/S
Division Entrance Control
Postboks 179, Kalbakken N-0903, Oslo
Tel. +47 22 80 42 00
Fax +47 22 80 42 01

SPAIN Gunnebo Entrance Control
BBC, Comte d'Urgel 143, lola 08036,
Barcelona
Tel +34 93 452 59 56
Fax +34 93 451 56 53

SWEDEN Gunnebo Entrance Control
Box 500, Kumla Gardsvag 33F, 145 63
Norsborg
Tel +46 (0)8 53 17 15 75
Fax +46 (0) 8 53 18 85 39

UNITED KINGDOM Gunnebo Mayor Ltd
Bellbrook Business Park, Uckfield,
East Sussex, TN22 1QQ
Tel +44 (0) 1825 761022
Fax +44 (0) 1825 763835

USA Gunnebo Omega Inc
535 Getty Court, Suite F
Benicia, CA 94510
Tel +1 707 7480885
Fax +1 707 7456020