

**Product Sheet**

**HiddenGate2 BPW**  
*Bi-Parting Gate for Internal Installation giving a wide walkway to comply with Disability Discrimination requirements*



**Technical Specification**

**Unit Dimensions:** Casework Length (Normally Closed) 1448mm  
(Normally Open) 1932mm  
Casework Height 950mm  
Casework Width 480mm  
Clear Walkway 900mm

**Drive:** Motorised

**Materials:** Top: Painted Polyurethane finished metallic grey  
Front: Painted Polyurethane finished metallic grey  
Wing Housing: Painted Steel finished to match Top and Front  
Inlay: 304 grade grained Stainless Steel  
Wings: 15mm clear Acrylic  
Side Doors: PMMA and grained Stainless Steel  
Plinth: 304 grade grained Stainless Steel

**Function:** Passage in both directions electronically controlled.

The HiddenGate is available in either Normally Closed (N/C) or Normally Open (N/O) modes.

In N/C the HiddenGate provides a closed lane and will only open upon acceptance of an authorized signal whereas the N/O will only close should an unauthorized passage attempt occur.

**Drive Mechanism:** The wings are moved by mechanical arms. The arms are rotated by a torque shaft connected to the drive unit. The drive unit is a DC motor working in conjunction with a bi-directional encoder. A microprocessor control system guarantees the precise movement and positioning of the wings.

A safety photocell prevents the wings from closing on an obstruction. Should the normal wing operation be stopped by an obstruction, the controlling logic detects an abnormal condition and reverses the wing to the fully open position.

**Method of Operation:** On receiving a signal from the access control system, or push button, the wings open. If an unauthorised person tries to tailgate or attempts to enter from the opposite direction, the system detects the unauthorised passage and activates the in-built alarm system.

Presence sensing is achieved by 6 No. infrared sensors for the short cabinet (N/C) and 14 No. for the long cabinet (either N/C or N/O)

**Status Lights:** LED display Status Lights flush mounted within the HiddenGate lid top face. The Green badge symbol is continuously illuminated indicating passage is available. Upon authorisation a Green arrow will illuminate in the direction of passage authorisation whilst in the opposite direction a Red cross symbol will illuminate to indicate the unit is not available for use or is already in use.

**Power Failure:** In the event of a power failure the wings will remain in the current position (if the optional battery back-up is not installed).

**Fire Alarm:** Input facility is available for voltage free contact supplied by others to effect fail state.

**Interface:** Potential free contact provided by either cardreader or pushbutton input. Cardreader inhibit and reset outputs signals are available as standard.

The unit has an adjustable time out facility if required, i.e. Go signal will be cancelled if the passage through the HiddenGate is not completed within a pre-set time. The Standard default is 8 seconds adjustable via parameter change.

**Product Description**

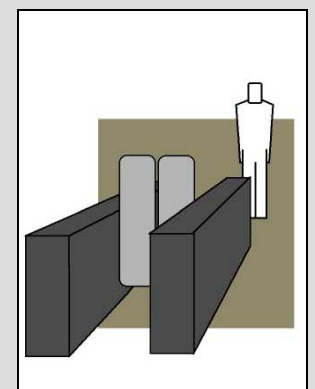
This award winning range of entrance gates from our Regulate range is the latest for today's security requirements.

New concepts, new materials, personalisation with a selection of operating systems, and features. Proven technology, for fast, reliable operation.

"Normally Closed " presents obvious security, whilst "Normally Open " is for the more subtle presence.

**Users include**

- Government
- Retail
- Finance
- Telecommunications
- Information Technology
- Banking
- Publishing
- Leisure
- Petrochemical
- Education



**Power Supply:** 115/230 Volts AC 50/60 Hz

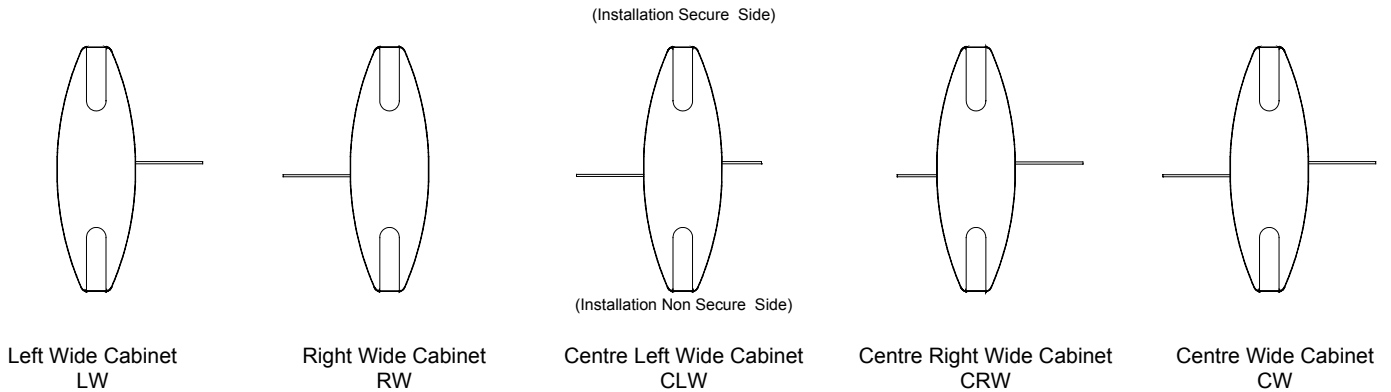
**Power Rating:** Stand by 10 VA  
In operation 300 VA

**Logic Voltage:** 24 Volt DC

**Installation Details:** The HiddenGate is delivered as a fully assembled unit and may require lifting gear for off loading.

**Approximate Weight** NC - Left or Right cabinet (LW or RW) circa 145Kg per cabinet  
NC - Centre cabinet (CLW, CRW or CW) circa 190Kg per cabinet

### Models Available



**Note** - All cabinet variants are available in either Normally Open or Normally Closed construction

### Extra Accessories and Optionals

#### Alternative Materials, Finishes and Custom Design

- Refer to Gunnebo Italdis for specific material design requirements.

#### Cardreader Mounting (Please refer to Gunnebo Italdis for feasibility)

- Integration of customer supplied readers into the HiddenGate Top or Front inlays.
- Cardreader Pedestals.

#### Battery Back Up

- On power failure, the battery back up option will allow the wings to open, stop and become inactive. The wings will remain in this position until power is restored.

#### Push Button Control

- Simple console to control HiddenGate wing release.
- Remote console to specific requirements.
- Casework mounted push button.

#### Additional Interface

- RS 485 Serial Interface

#### Traffic Flow Control

- LED Way Mode Indicator – Switching Red cross and Green arrow to indicate the unit is available for use
- Remote switching of unit for Traffic Flow.

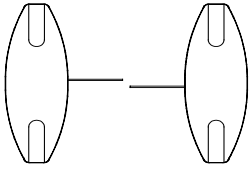
#### Counting

- LCD Counter
- Electro-mechanical Counter

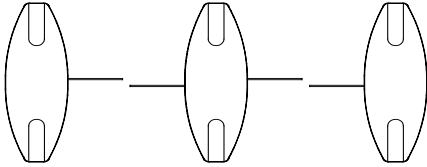
### Installation examples



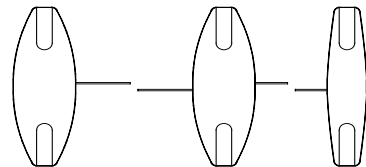
## HiddenGate General Lane Configuration



One Lane configuration comprising of  
N<sup>o</sup>1 LW and 1N<sup>o</sup> RW cabinets



Two Lane configuration comprising of  
N<sup>o</sup>1 LW, 1N<sup>o</sup> CW and 1N<sup>o</sup> RW.



Two Lane configuration comprising a mixture of wide and standard cabinets comprising 1N<sup>o</sup> LW, 1N<sup>o</sup> CRW and 1N<sup>o</sup> R (standard 300mm unit)  
Please refer to Gunnebo Italdis for layout advise.

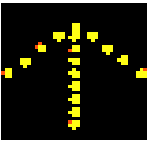
## Status Light User Instructions

### • Normal Use



#### **Green Card** (Rest mode)

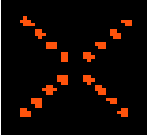
- Present personal security card to the reader mounted on the unit for authorisation.
- Wait for the Green Arrow to illuminate and the barrier to open.



#### **Green Arrow** (Authorised use or designated free passage)

- Proceed through the unit.

**Note** - For FREE PASSAGE configuration, authorisation is not required and is normally used for EXIT only.



#### **Red Cross** (Unit in use or no passage)

- Wait until the passageway has been vacated and either the Green Card or Green Arrow to illuminate. (See above)

### • Alarm Conditions



#### **Flashing Red Cross and Audible Alarm** (Fraudulent condition)

- This alarm mode will be activated via the following scenarios;

Passageway is already in use and a second person has attempted to follow through without authorisation. (Tailgating) OR Passageway is currently in use and you do not have right of passage.

- **Do not panic.**
- Vacate the passageway.
- Wait for the flashing Red Cross to stop flashing and the Audible Alarm to cease.
- Wait for the Green Arrow to illuminate to indicate who has the right of passage.



#### **Flashing Green Card** (Incorrect use mode)

- **Do not panic.**
- Remain in the walkway and present personal security card to the reader mounted on the unit for authorisation.
- Authorisation of passage will cancel the alarm condition.



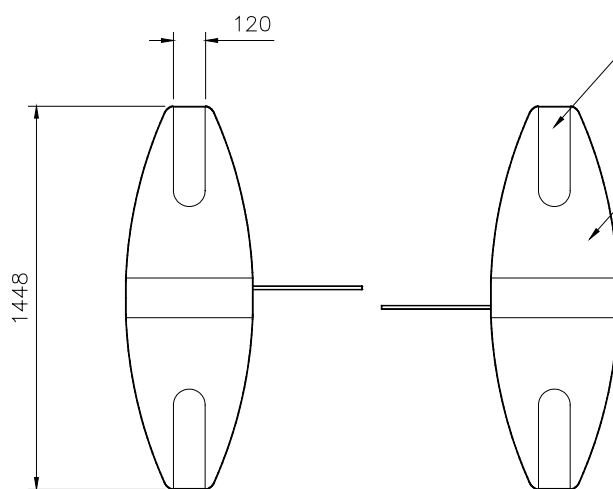
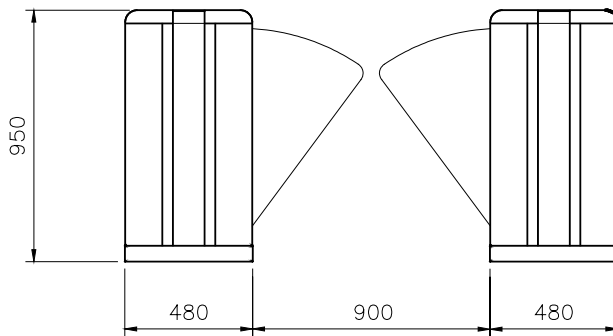
#### **Flashing Green Arrow** (Emergency / Fire Exit)

- **Do not panic.**
- There is FREE PASSAGE to evacuate through the gate

## Site Preparation - HiddenGate2 BP

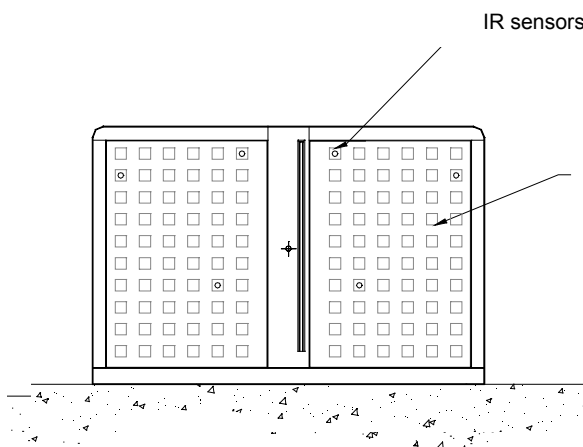
Short Cabinet Normally Closed only

(Wings shown in closed position in left and right configuration)



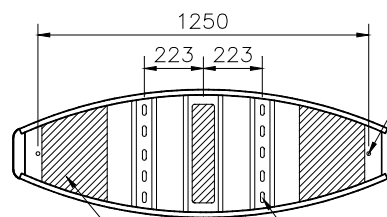
Stainless Steel inlay available to accommodate a wide selection of access control devices. (by others)

Top and fronts manufactured from self extinguishing polyurethane



IR sensors

PMMA and stainless steel side doors



Chassis end fixings (Drill 2N<sup>o</sup> on site to suit)

Mechanism and chassis fixing holes dependant upon cabinet variant. (Drill 4N<sup>o</sup> on site to suit.)

Cables and conduits to rise to shaded areas shown.

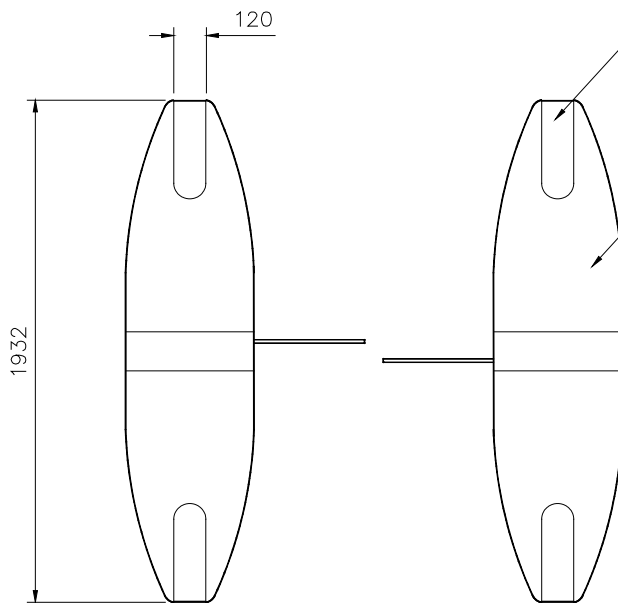
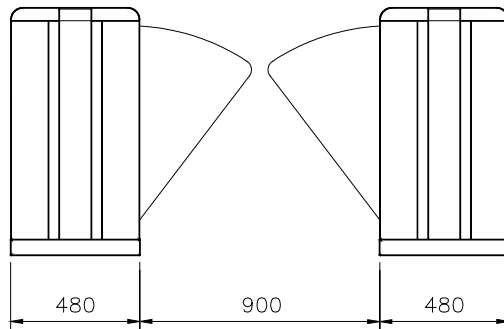
Concrete to UNI 9858, RCK250 type.  
Base to be flat and level to +/- 5mm over the Hidden Gate footprint area. 1500 x 500 x 150 deep min. per cabinet

### IMPORTANT

- Any horizontal pipe or conduit runs below the HiddenGate must be at least 140mm below FFL.

## Site Preparation - HiddenGate2 BP

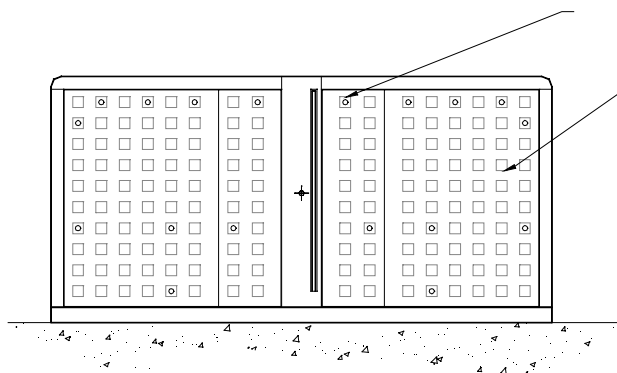
Long Cabinet either Normally Closed or Open  
(Panels shown in closed position in Left and Right configuration)



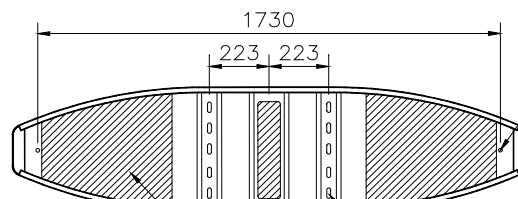
Stainless Steel inlay available to accommodate a wide selection of access control devices. (by others)

Top and fronts manufactured from self extinguishing polyurethane

IR sensors



PMMA and stainless steel side doors



Chassis end fixings (Drill 2N<sup>o</sup> on site to suit)

Mechanism and chassis fixing holes dependant upon cabinet variant. (Drill 4N<sup>o</sup> on site to suit.)

Cables and conduits to rise to shaded areas shown.

Concrete to UNI 9858, RCK250 type. Base to be flat and level to +/- 5mm over the Hidden Gate footprint area.  
1500 x 500 x 150 deep min. per cabinet

### IMPORTANT

- Any horizontal pipe or conduit runs below the HiddenGate must be at least 140mm below FFL.

# GUNNEBO ITALDIS

## ENTRANCE CONTROL SOLUTIONS

### ITALY

Gunnebo Italdis SpA, Via A Volta 15 - IT 38015, Lavis (TN)

Tel +39 0461 248 900 Fax +39 0461 248 999

Gunnebo Italdis SpA, Via Torri Bianche, 9 – IT 20059, Vimercate, (MI)

Tel +39 039 685 95 11 Fax +39 039 685 95 24

[www.gunneboentrance.com](http://www.gunneboentrance.com)

*Note: In pursuit of its policy of continuous refinement and improvement, Gunnebo Italdis SpA reserves the right to modify design and details.*

#### A COMPANY WITHIN THE GUNNEBO GROUP.....

**HEAD OFFICE SWEDEN – Gunnebo Entrance Control AB, SE-590 93, Gunnebo.**

Tel +46 (0) 490 89000, Fax +46 (0) 490 23889

**DENMARK** Gunnebo Protection A/S  
Division Entrance Control  
Erhvervsparken 3, DK-4621 Gadstrup  
Tel +45 46 19 14 66  
Fax +45 46 19 14 55

**FRANCE** Gunnebo Entrance Control SARL  
Zone d'Activites Le Mandinet,  
20 Rue des Campanules  
F-77185, Lognes  
Tel +33 (0) 1 64 80 14 40  
Fax +33 (0) 1 64 80 14 39

**GERMANY** Gunnebo Entrance Control GmbH  
Diagonalstrasse 41, D-20537  
Hamburg  
Tel +49 (0) 40 47 11 30 0  
Fax +49 (0) 40 47 11 30 79

**HONG KONG** Gunnebo Entrance Control  
Room 2312, C.C. Wu Building,  
302-308 Hennessy Road, Wanchai.  
Tel +852 2882 8337  
Fax +852 2523 7880

**ITALY** Gunnebo Italdis SpA  
Via A Volta 15 - IT 38015  
Lavis (TN)  
Tel +39 0461 248 900  
Fax +39 0461 248 999

**NORWAY** Gunnebo Troax A/S  
Division Entrance Control  
Postboks 179, Kalbakken N-0903, Oslo  
Tel. +47 22 80 42 00  
Fax +47 22 80 42 01

**SPAIN** Gunnebo Entrance Control  
BBC, Comte d'Urgel 143, lola 08036,  
Barcelona  
Tel +34 93 452 59 56  
Fax +34 93 451 56 53

**SWEDEN** Gunnebo Entrance Control  
Box 500, Kumla Gardsvag 33F, 145 63  
Norsborg  
Tel +46 (0)8 53 17 15 75  
Fax +46 (0) 8 53 18 85 39

**UNITED KINGDOM** Gunnebo Mayor Ltd  
Bellbrook Business Park, Uckfield,  
East Sussex, TN22 1QQ  
Tel +44 (0) 1825 761022  
Fax +44 (0) 1825 763835

**USA** Gunnebo Omega Inc  
535 Getty Court, Suite F  
Benicia, CA 94510  
Tel +1 707 7480885  
Fax +1 707 7456020